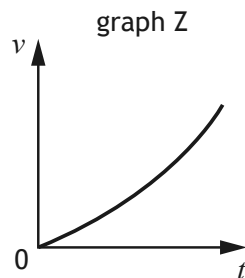
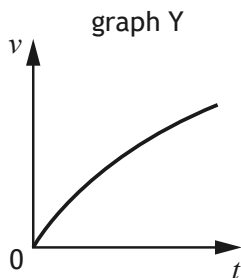
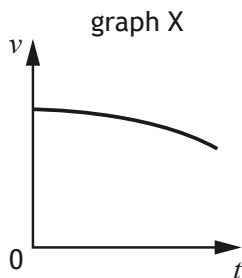


4. A ball is thrown horizontally over the edge of a cliff.

A group of students draw three velocity-time (v - t) graphs to represent the motion of the ball, when air resistance is taken into account.



Which row in the table shows the graphs that represent the horizontal component of the velocity and the vertical component of the velocity?

	Horizontal component of the velocity	Vertical component of the velocity
A	graph X	graph Y
B	graph X	graph Z
C	graph Y	graph X
D	graph Y	graph Z
E	graph Z	graph X