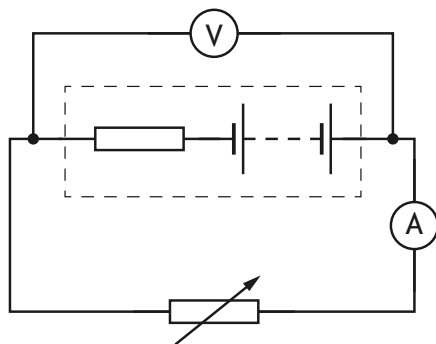
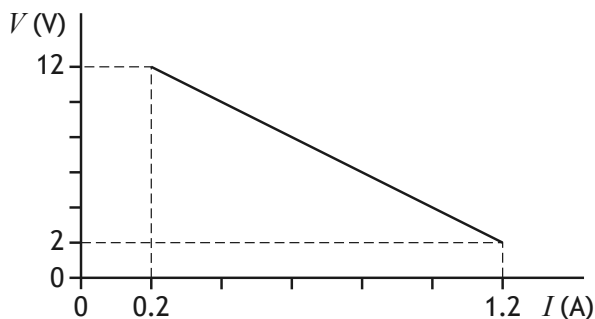


20. A circuit is set up as shown.



The resistance of the variable resistor is changed and the corresponding readings on the ammeter and voltmeter are used to produce the graph shown.



A student makes the following statements based on this information:

- I The EMF of the battery is 12 V.
- II The internal resistance of the battery is  $10\ \Omega$ .
- III The short circuit current is 1.2 A.

Which of these statements is/are correct?

- A I only
- B II only
- C III only
- D I and II only
- E I, II and III