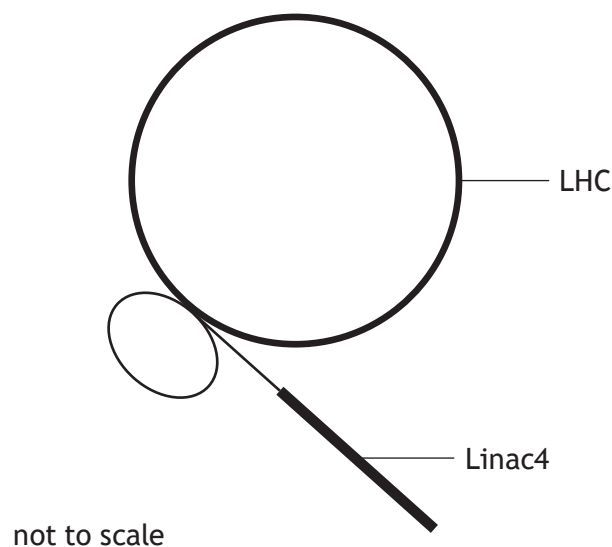


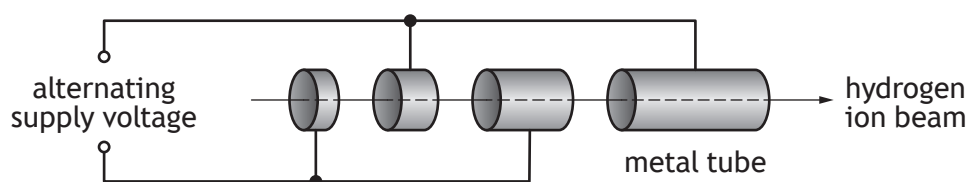
7. The Large Hadron Collider (LHC) at CERN has been upgraded recently. One of the upgrades is the addition of a linear particle accelerator known as Linac4.



Linac4 accelerates hydrogen ions before they enter the main LHC.

Linac4 consists of hollow metal tubes placed in a vacuum. The hydrogen ions are accelerated across the gaps between the tubes.

Part of Linac4 is shown below.



- (a) (i) Explain why an alternating supply voltage is used in Linac4.

1

- (ii) Suggest one reason why the lengths of the tubes increase along Linac4.

1

[Turn over



7. (continued)

MARKS

DO NOT  
WRITE IN  
THIS  
MARGIN

- (b) Linac4 accelerates the hydrogen ions to a speed of  $0.50c$ . The hydrogen ions then travel through a connecting tube before entering the LHC.

The connecting tube has a length of 13 m in the frame of reference of a stationary observer.

Calculate the length of the connecting tube in the frame of reference of the hydrogen ions.

3

*Space for working and answer*

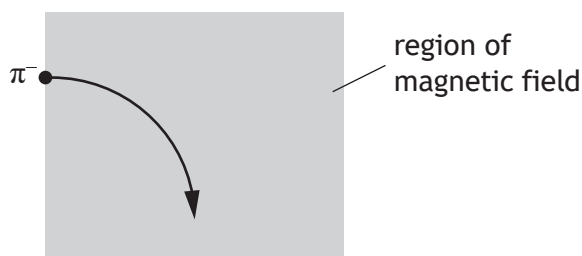
- (c) Hydrogen ions can be collided within the LHC to produce other particles.

One of the particles produced is known as a  $\pi^-$  meson. The  $\pi^-$  meson is negatively charged.

- (i) State what is meant by the term *meson*.

1

- (ii) The  $\pi^-$  meson enters a region of magnetic field and follows the path shown.



Determine the direction of the magnetic field acting upon the  $\pi^-$  meson.

1



\* X 8 5 7 7 6 0 1 2 0 \*

7. (continued)

(d) In July 2018, scientists at CERN announced that the Higgs boson had been observed to decay into two bottom quarks.

- (i) One of the fundamental forces involved in the decay of the Higgs boson is the weak nuclear force.

Name a force mediating particle for the weak nuclear force.

1

- (ii) A bottom quark has a mass-energy equivalence of 4.20 GeV.

(1 eV =  $1.60 \times 10^{-19}$  J)

Determine the mass of the bottom quark.

4

*Space for working and answer*



\* X 8 5 7 7 6 0 1 2 1 \*