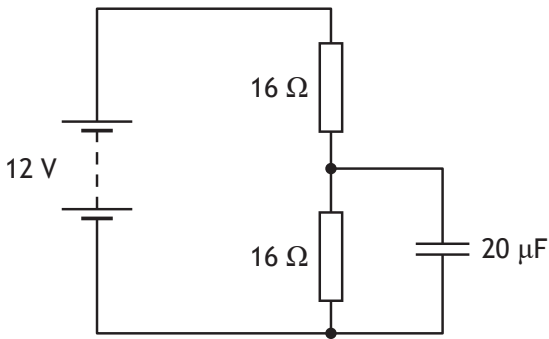


24. A circuit containing a capacitor is set up as shown.



The battery has negligible internal resistance.

The maximum charge stored by the capacitor is

- A $3.6 \times 10^{-4}\ \text{C}$
- B $2.4 \times 10^{-4}\ \text{C}$
- C $1.2 \times 10^{-4}\ \text{C}$
- D $3.3 \times 10^{-6}\ \text{C}$
- E $1.7 \times 10^{-6}\ \text{C}$.