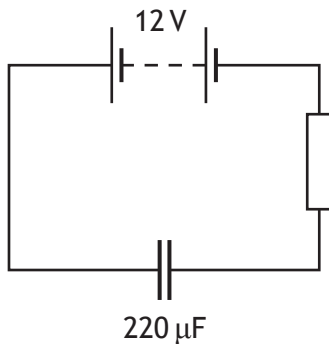


18. A circuit is set up as shown.



When the capacitor is fully charged the energy stored in the capacitor is

- A  $1.6 \times 10^{-5} \text{ J}$
- B  $1.3 \times 10^{-3} \text{ J}$
- C  $2.6 \times 10^{-3} \text{ J}$
- D  $1.6 \times 10^{-2} \text{ J}$
- E  $1.6 \times 10^4 \text{ J}$ .