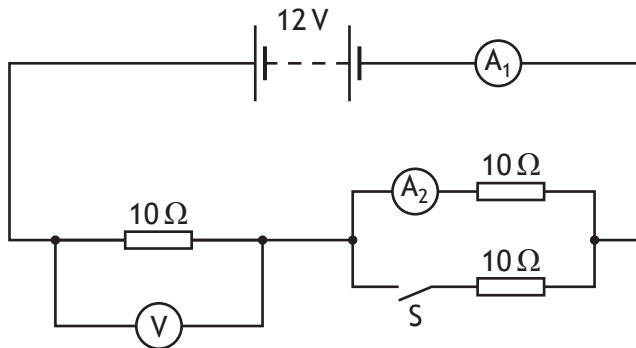


15. A circuit is set up as shown.



The battery has negligible internal resistance.

A student makes the following statements about the readings on the meters in this circuit.

- I When switch S is open the reading on the voltmeter will be 6.0 V .
- II When switch S is open the reading on A_2 will be 0.60 A .
- III When switch S is closed the reading on A_1 will be 0.80 A .

Which of these statements is/are correct?

- A I only
- B II only
- C I and II only
- D II and III only
- E I, II and III