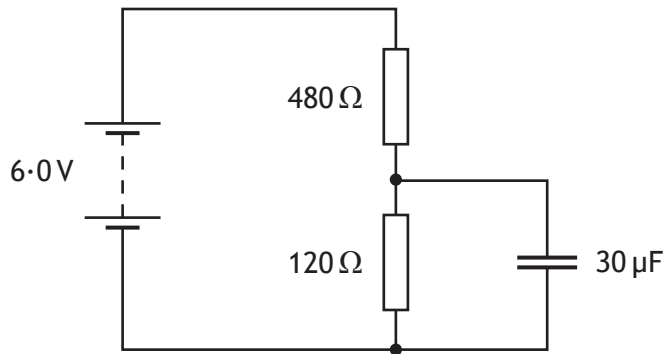


18. A circuit containing a capacitor is set up as shown.



The supply has negligible internal resistance.

The maximum energy stored in the capacitor is

- A $5.4 \times 10^{-4} \text{ J}$
- B $3.5 \times 10^{-4} \text{ J}$
- C $1.4 \times 10^{-4} \text{ J}$
- D $3.4 \times 10^{-5} \text{ J}$
- E $2.2 \times 10^{-5} \text{ J}$.