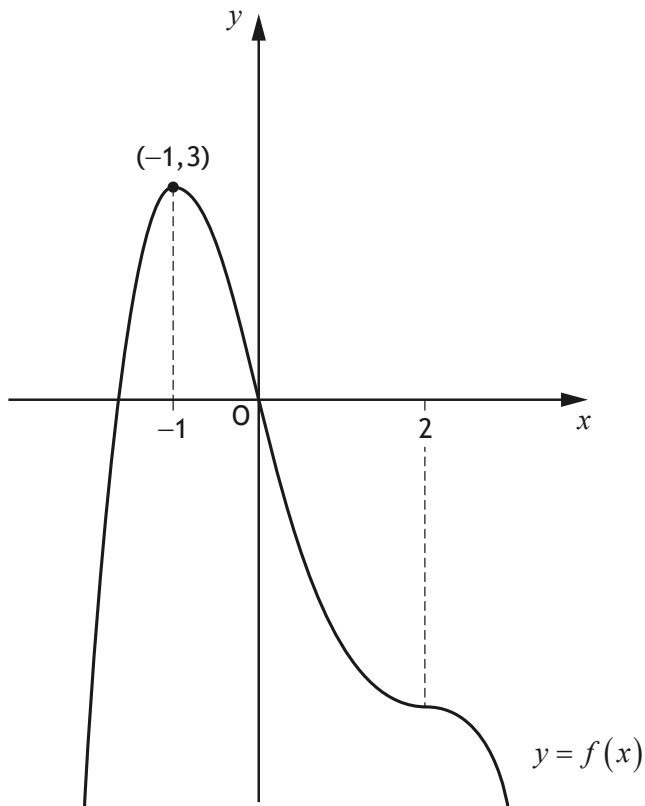


4. The diagram shows the graph of a quartic function $y = f(x)$.
 A maximum turning point occurs at $(-1, 3)$.
 The graph of $y = f(x)$ also has a point of inflection at $x = 2$.



- (a) Determine the coordinates of the maximum turning point on the graph of $y = f(x - 4) + 2$. 2
- (b) On the diagram in your answer booklet, sketch the graph of $y = f'(x)$. 3