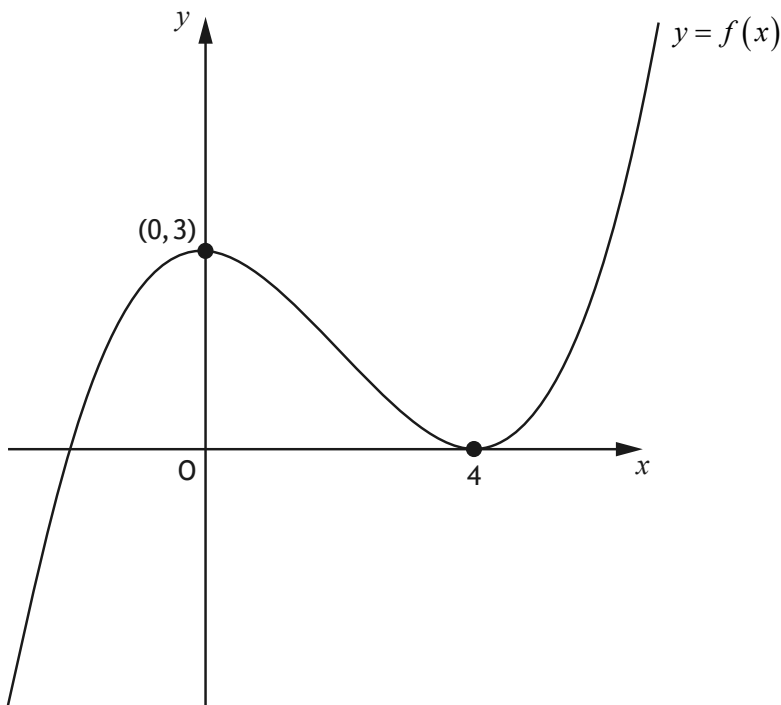


10. The diagram shows the graph of a cubic function with equation $y = f(x)$.
The curve has stationary points at $(0, 3)$ and $(4, 0)$.



- (a) Sketch the graph of $y = 2f(x) + 1$.

3

Use the diagram provided in the answer booklet.

- (b) State the coordinates of the stationary points on the graph of $y = f\left(\frac{1}{2}x\right)$.

1