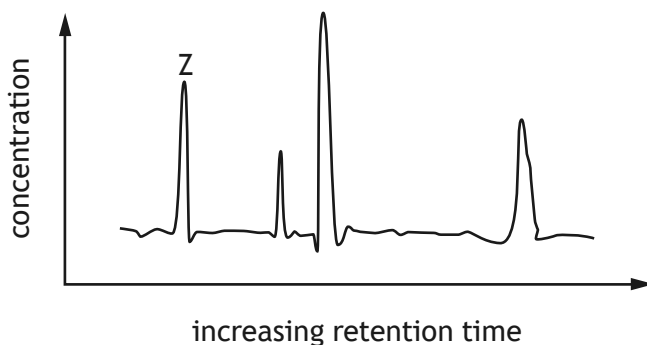


16. A chemist analysed a mixture of four dyes, A, B, C and D, using gas-liquid chromatography. The time taken to travel through the column (retention time) depends on the polarity of the molecule. The more polar the molecule the longer the retention time. The following chromatogram was obtained.



Which of the following compounds corresponds to peak Z?

Dye	Structure
A	
B	
C	
D	